

CW

INDIA & GULF'S FIRST B2B INTERIORS MAGAZINE

interiors

VOL 6 • No 9 • May 2014 • ₹100 • USD 10 • Dhs 30

INDIA

Designs

Punam Kalra
Tejas Mistry
Manish Kumat

Special features

Wall Coverings
Ceilings



Featuring 40+ products

ASIAPP
MEDIA INFORMATION GROUP

www.CWinteriors.in

This stone wall cladding in a Delhi residence is part of the Crosta collection from Odyssey. It has Autumn Grey quartzite as the base stone with a 3-dimensional surface silver leafing to provide an incandescent look.

RUCHIKA GROVER,
Director, Odyssey: Stone Architecture
& Design

Today, people are a lot more experimental with internal wall cladding than they have ever been. It could be something as sparse as concrete walls, or as rustic as stone masonry or sleeper wood planks, or as opulent as elaborately carved wood, limestone or marble walls inlaid with gemstones. I would recommend natural materials as I love the natural veins and colour variations of stone and wood. Natural materials have a definite edge over paint or wall paper in terms of maintenance required.

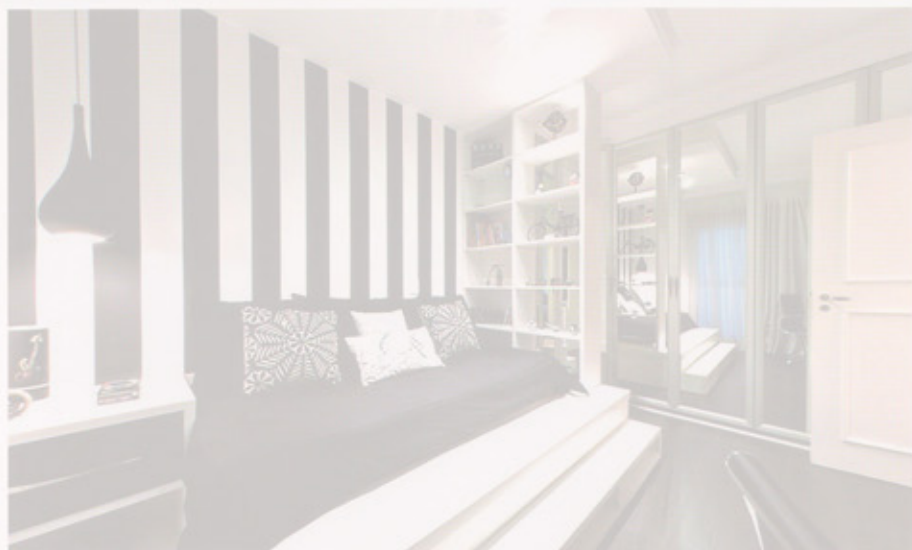
We are experimenting a lot with digital fabrication, and stone and wood allow us flexibility in the scale of our operations as larger than life, fabulous installations are possible. Odyssey has launched several internal cladding options in the stone range – the Crosta, a modular cladding option where each pattern allows a play of shadows on the vertical surfaces, adding dimensionality to them; the Kinetic a customisable solution, which allows the architect or customer to control the dimensionality and turbulence on the wall, making every wall unique; the breaching surfaces or *jaalis* which offer perforated solutions.

Our latest collection Ishi-Kiri, inspired by the Japanese paper folding art of Origami, is meant for surfaces, sculptures and cascades. Through customisation of surfaces in the form of back and front-lit options for walls, Ishi-Kiri can be manipulated for extraordinary results.



MONA MENON,
Chief Executive Officer, Marshalls
Enterprise India

World over, wallpaper is the most preferred wall décor, and it's catching on in India, too. Marshalls now refers to wall papers as wall coverings, as there is very little or no paper in the European and American collection that Marshalls offers. The major USPs of Marshalls' wall coverings as compared to paint are instant application, and a variety of design, shade and material options to suit every décor. They are durable for up to 20 years, fire resistant, thermal and heat efficient, energy efficient and eco-friendly. When compared to laminate, veneer, ACP or stone cladding, Marshalls' wallpapers provide seamless finish with no grooves or joints. We offer a German wall covering at Rs 30 per sq ft and exclusive silk, jute, cane, glass beads, bamboo, mica and suede finishes for highlights.



This ready to use HDF based melamine coated decorative wall cladding from Action Tesa is provided with kraft paper with a special chemical at the back to prevent moisture damage.